



**AIA /ATA/ ASD
S1000D Users Forum**

“S1000D: Realizing the Benefits of Integrated Logistics Support”

October 12- October 15, 2009

Crown Plaza Hilton Head Resort, Hilton Head, SC, USA

S2000M - Consistent parts data throughout ILS

by

Karl-Heinz Haerdtl

(S2000M MCG Industry co-chair)

EADS



AeroSpace and Defence
Industries Association of Europe



Air Transport Association



S2000M Materiel Management

Content:

1. Aim and structure of the S2000M
2. Location of the S2000M within the ILS concept
3. What's next



S2000M Materiel Management

- S2000M defines the Materiel Management processes and procedures to be used in support of any military Product
 - Although this Specification is designed for military Product support, it may nevertheless be used for the support of any non-military Product
- The S2000M describes the business relationship between Industry and Customer by providing the process flow, the relevant transactions and data elements used for the Materiel Management



S2000M Materiel Management

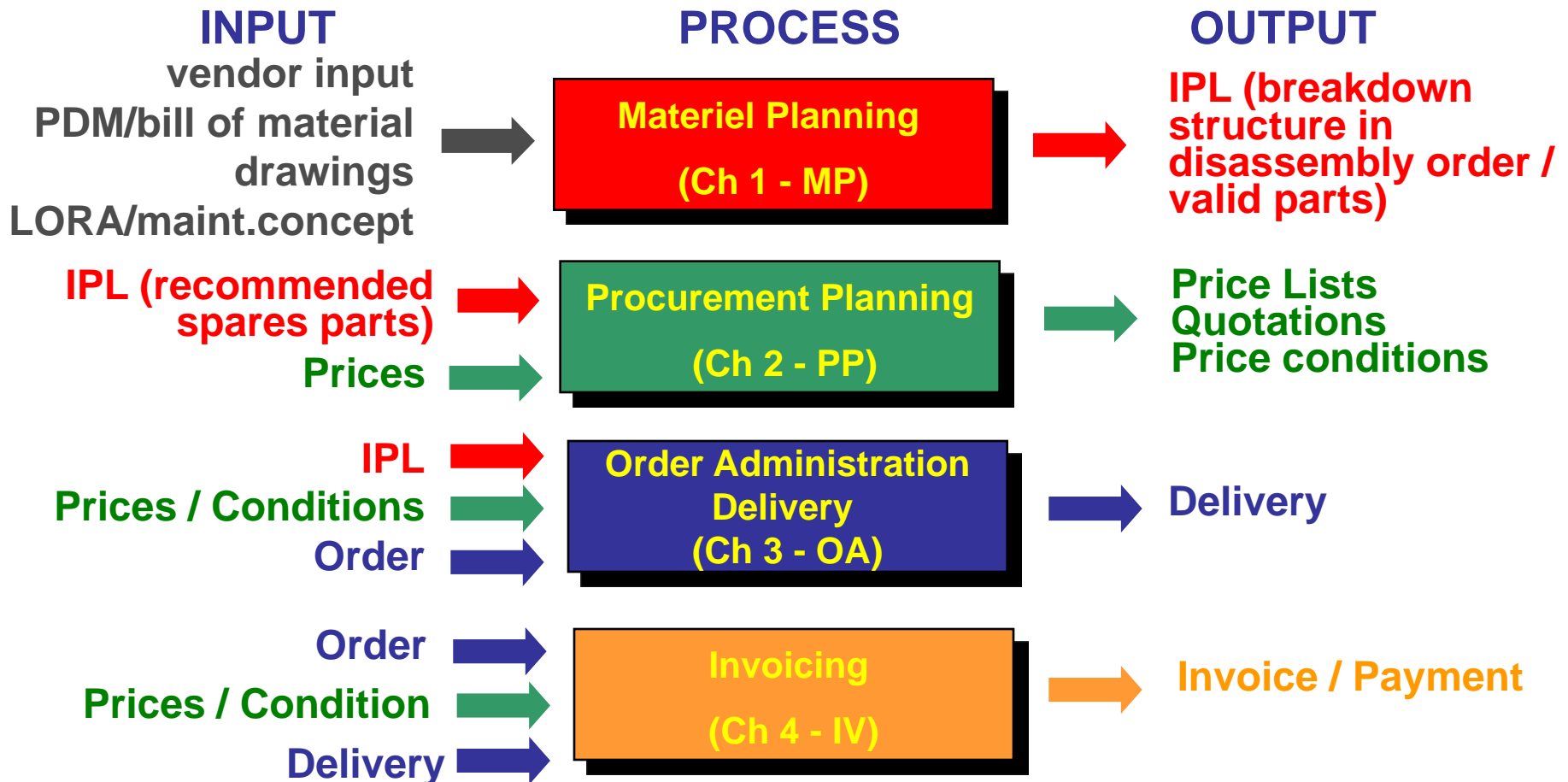
The S2000M is organized into basic chapters:

- Chapter 1 Provisioning General
- Chapter 2 Pricing
- Chapter 3 Order Administration
- Chapter 4 Invoicing
- ...



S2000M Materiel Management

S2000M Information Flow





S2000M Materiel Management

- Chapter 1: (MP) Provisioning General
Provisioning is the process of selecting spares and support items, necessary for the support of any military Product
 - This chapter defines how to provide the provisioning information to the Customer
 - It also provides the data base from which Illustrated Parts Catalogues (IPC) or Illustrated Parts Data Publication (IPDP) are produced → S1000D.
 - The NATO Codification processes and information are covered for data exchange between Industry, the National Codification Bureau and the Customer
 - The data updating procedure is covered.



S2000M Materiel Management

- Chapter 2, 3 and 4 are providing the features for Material Supply
- Chapter 2: (PP) Pricing
This Chapter defines methods for Industry to provide pricing information on parts to the Customer
 - via Price List
 - via a quotation process
 - via order based pricing
 - also National Pricing Regulation are covered (provisional prices / fixed prices)



S2000M Materiel Management

- Chapter 3: (OA) Order Administration
Order Administration covers the process of order placement, and the flow of information concerning the progress of orders and deliveries
 - Order Placement
 - for spares, AGE, ModSets, repair or other services
 - Order Response
(acceptance / rejection)
 - Order Change
(by Customer or Contractor)
 - Change Response
 - Delivery Information
 - Delivery Response
 - Hastening



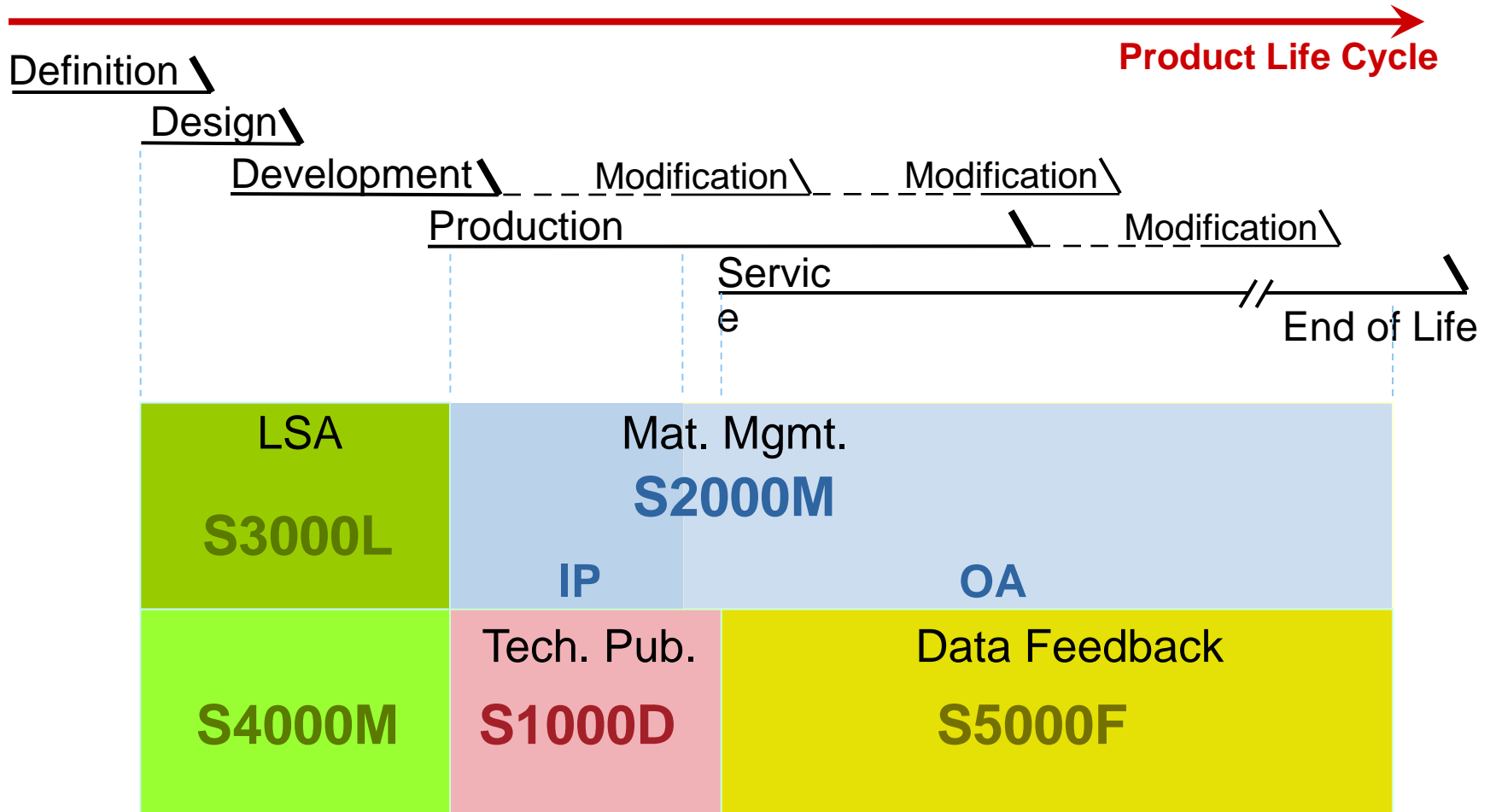
S2000M Materiel Management

- Chapter 4: (INV) Invoicing
Invoicing provides a standard process of transmitting invoice data and invoice status between the Contractor and Customer
- National Pricing Regulations requires
 - Provisional Invoicing
 - Final Invoicing
 - Invoice Adjustment
- Invoice Types for
 - claim for payment
 - for validation only
 - summary invoice claim



S2000M Materiel Management

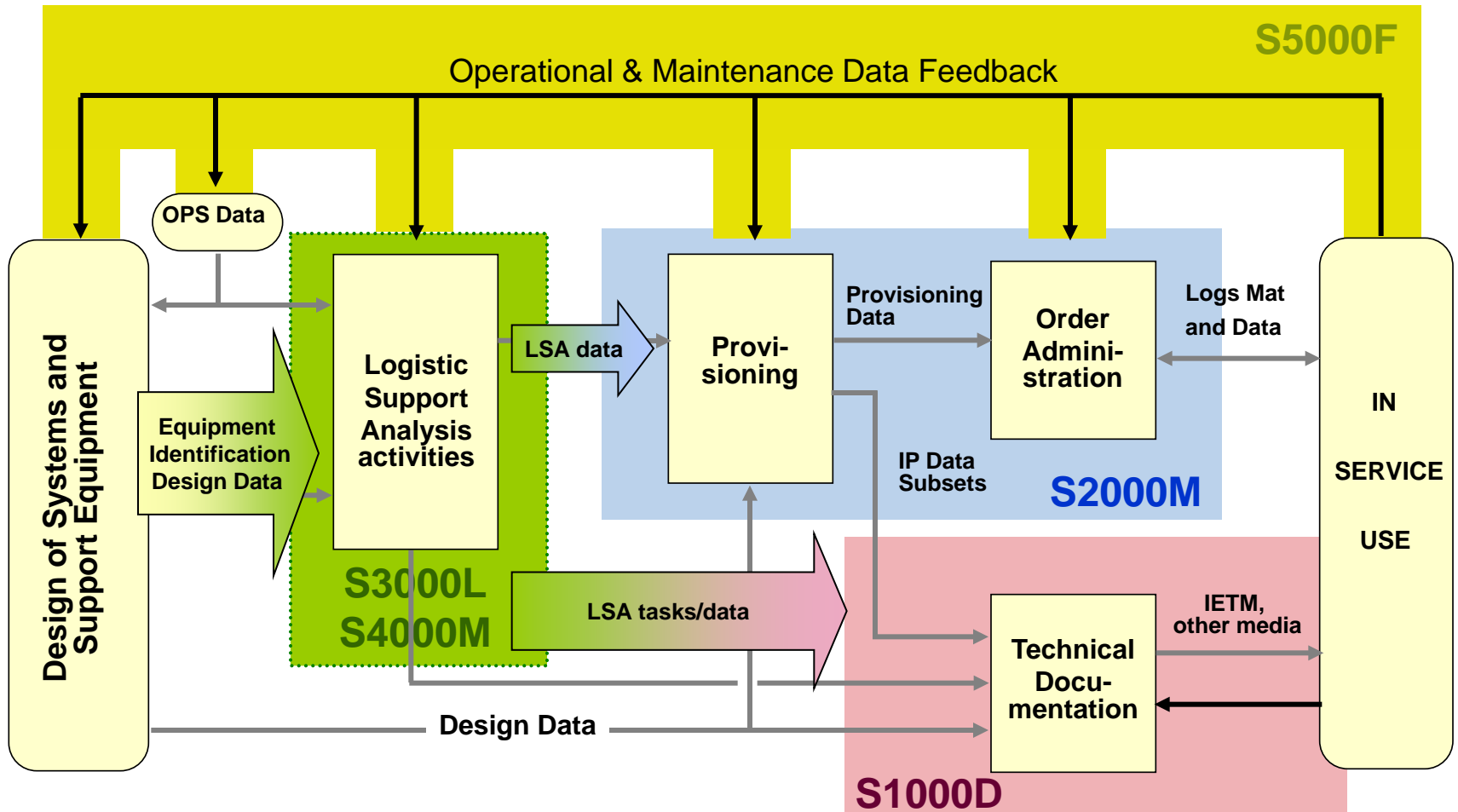
Integration of S2000M (Mat. Mgmt.) into the ILS Concept





S2000M Materiel Management

Integration of S2000M (Mat. Mgmt.) into the ILS Concept



acc. to NATO Acquisition Logistics Workshop of 1993



S

part number with MFC, NSN, PLT, UOI, UOM, QUI ... and validity/service

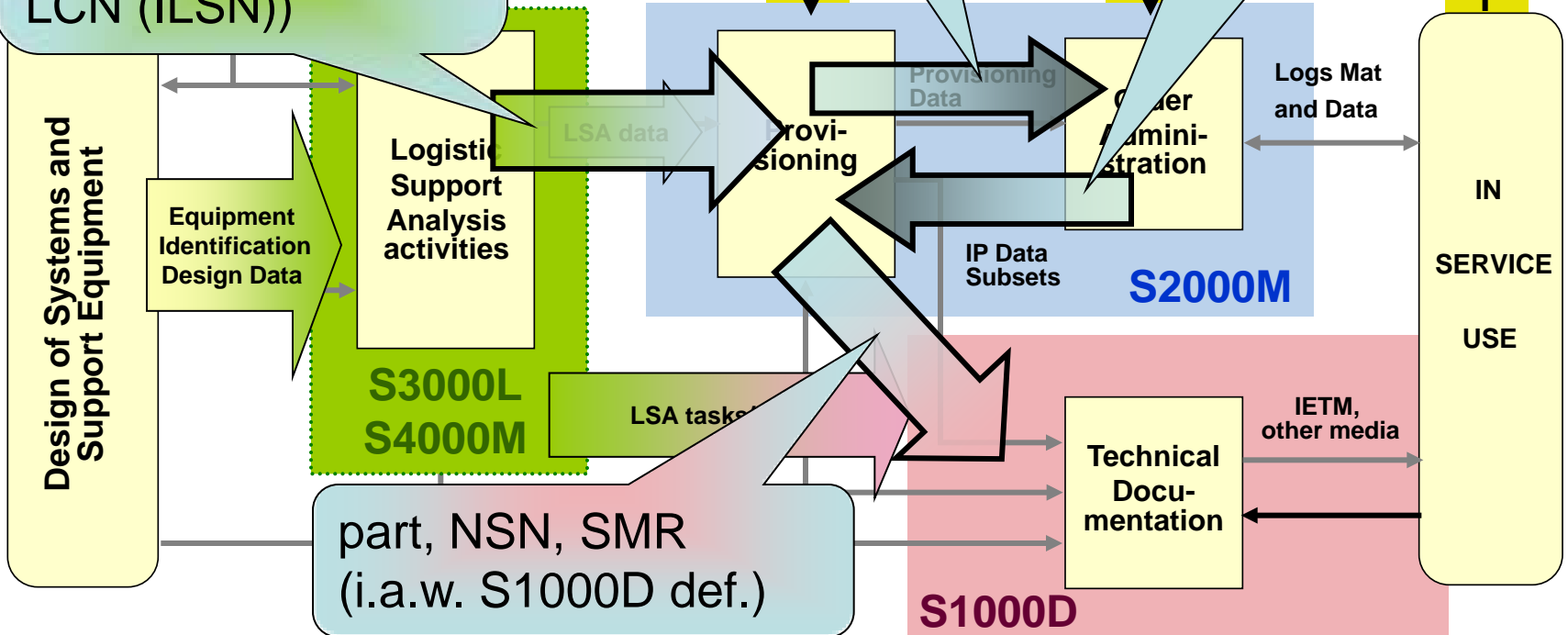
Management

Integration of S into

parts information
-prices /price conf.
-leadtime
-obsolescence inf.

Maintenance Task Description
MTBF
LCN (ILSN)

Operational & Maintenance Data Feedback

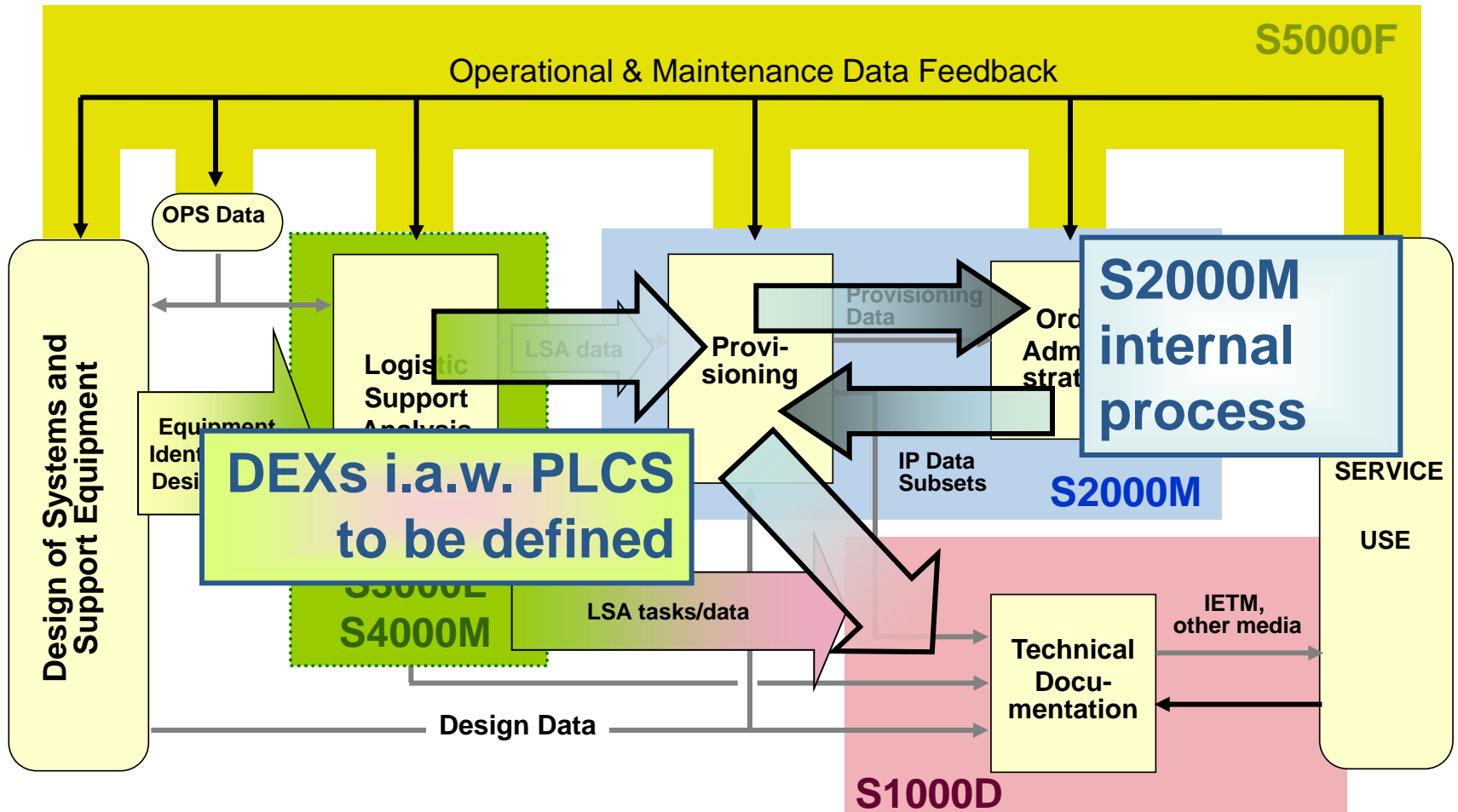


part, NSN, SMR (i.a.w. S1000D def.)



S2000M Materiel Management

Integration of S2000M (Mat. Mgmt.) into the ILS Concept



acc. to NATO Acquisition Logistics Workshop of 1993



S2000M Materiel Management

next S2000M steps regarding ILS integration:

- continue investigation on how to transfer current 'EDIFACT like' messages into XML
- continue actions to analyze PLCS / DEXs for S2000M integration
- continue work on publication of the XML version of the S2000M
 - harmonization of XML publication standard with the other ASD specs



S2000M Materiel Management

Thank you very much

Questions?

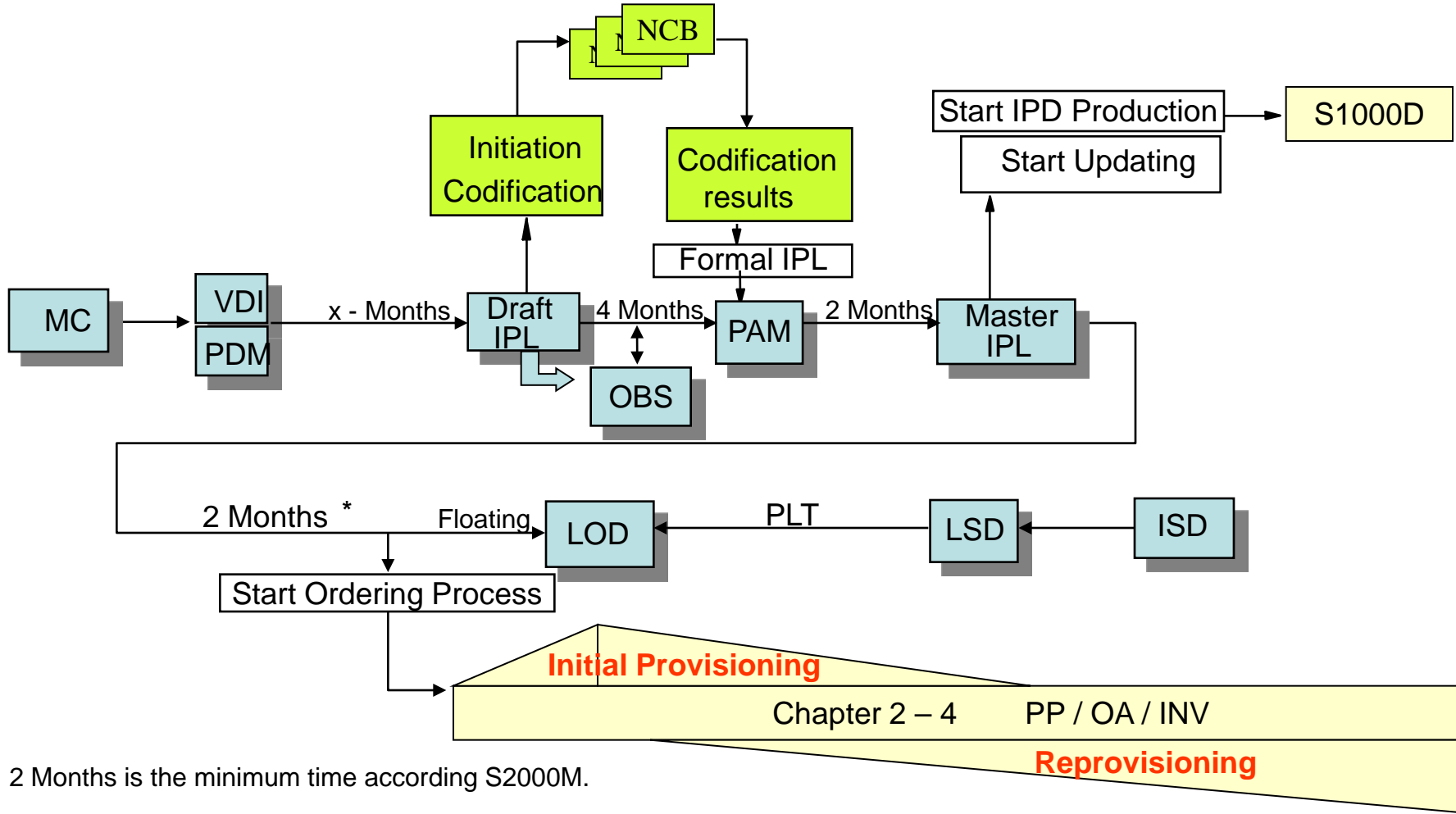


S2000M Materiel Management

back-up information



S2000M - IPL sequence



2 Months is the minimum time according S2000M.

*

MC - Maintenance Concept
 VDI - Vendor Data Input
 PAM - Pre Assessment Meeting

LOD- Last Order Date
 ISD - In Service Date
 LSD- Logistic Support Date



S2000M Chapter 1 messages

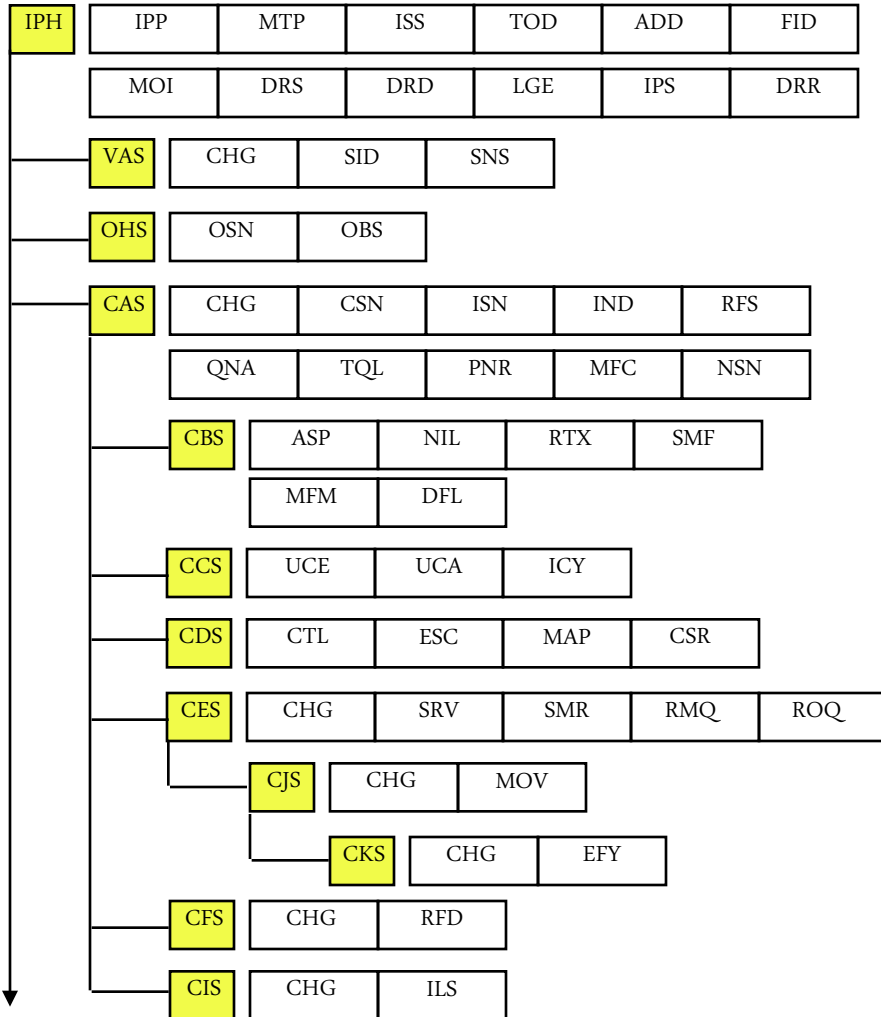
This Section 1A-7 presents the structure and format of the messages, which have been produced.

The following formats will be used:

- Transmission of Provisioning data from Contractor to Customer
 - CSNIPD** - CSN-orientated IP data
 - PNOIPD** - PN-orientated IP data
 - UPIPCO** - Category 1 Updating of IP data
 - UPIPCT** - Category 2 Updating of IP data
 - UPIPPN** - Updating of PN-orientated IP data
 - CORIPD** - Correction of IP data
 - RESTIP** - Restatement of IP-Data (introduced with issue 4.0)
- Transmission of Observations and Customer provided data
 - OBSINF**
- Transmission of Codification requests from Contractor to Home NCB
 - CODREQ**



S2000M Chapter 1 CSNIPD structure



IPH - Header Segment

Identification of the IP Project

VAS - Segment

Extension of IPH-segment, identifies the different variants

OHS - Segment

Free text

CAS - Segment

Association to the part-related data in the PAS-segment

Mandatory location-related data

Identification of the part applicable to the Location

CBS, CCS, CDS, CFS - Segment

Conditional - to be provided as requires by the item

CES - Segment

Mandatory, Service and SMR code

CJS - Segment

Mandatory associated with CES-segment

Identifies Aircraft or Engine Model Versions

CKS - Segment

Indicates the Effectivity

CIS - Segment

Indicates the Integrated Logistic Support Number



S2000M Chapter 1 CSNIPD structure

PAS	CHG	PNR	MFC	DFP	INC	NSN
	RNC	RNV	RNJ			
PBS	UOI	SPQ	TOP	ITY	SPC	
	PLT	STR	SLC	PLC	PCD	
PCS	UOM	OUI				
PDS	UPR	CUR	MSQ	PBD		
PES	CRT	SRA	TBF/MTI	TBO/TBI	TSV/TSI	
	AUL/ALI	TLF				
PFS	DMC	HAZ	PIC	FTC		
	PSC	ESD	CMK			
PGS	SUU	SPU	WUU	WPU		

PAS – Segment

Identifies the Part-related Data
The PAS-Segment and associated segments are to be provided once for each PN in the Project

PBS, PCS, PDS, PES, PFS – Segment

Conditional - to be provided by the item
PBS - Segment contains mandatory data for recommended spares

PES - Segment contains data for repairable



S2000M Materiel Management

Chapter 2 - pricing

... takes care about National Pricing Regulations
and NPA price approval processes

Price Types:

- Indicative
- Provisional
- Maximum
- Fix
- ...

Price Transmissions:

- Price Lists
- RFQ – Quotation
- Order based Price

Price Validity:

- Date of Order
- Date of CDD
- Date of Delivery

Price Category:

- Order Price
- Price Break
- MSQ Price
- ...



S2000M Materiel Management

Chapter 3 - Order Administration

Provisioning Category:

- Initial Provisioning
- Reprovisioning
- Spare
- Repair *
- AGE
- ModSet
- other Service
- Special Order
- Routine Order
- Expedite Order
-

Transaction Types:

- Order Placement
- Order Response
(acceptance / rejection)
- Order Change
(CUS/CON – QTY – FDD – PTY – UCD ...)
- Change Response
- Delivery Information
- Delivery Response
- Hastening

* Repair within Chapter 3 (2 and 4) or i.a.w. Chapter 5



S2000M Materiel Management

Chapter 4 - Invoicing

... considers impact of Chapter 2
(National Pricing Regulations)

Invoicing Category:

- Final Invoicing
- Provisional Invoicing
- Invoice Adjustment

Transaction Types:

- Invoice
 - for payment
 - for validation only
- Summary Invoice
- Payment Advice